



Comhairle Chontae Liatroma
Leitrim County Council



Comhairle Contae
Ros Comáin
Roscommon
County Council

Strategic Flood Risk Assessment (SFRA)

Appendix II (Maps)



www.carrickjointplan.ie

STRATEGIC FLOOD RISK ASSESSMENT

APPENDIX II: SELECTION OF FLOOD RISK INDICATOR AND ZONE MAPPING

FOR THE

CARRICK-ON-SHANNON JOINT LOCAL AREA PLAN 2025-2031

for: Leitrim and Roscommon County Councils



**Comhairle Chontae Liatroma
Leitrim County Council**

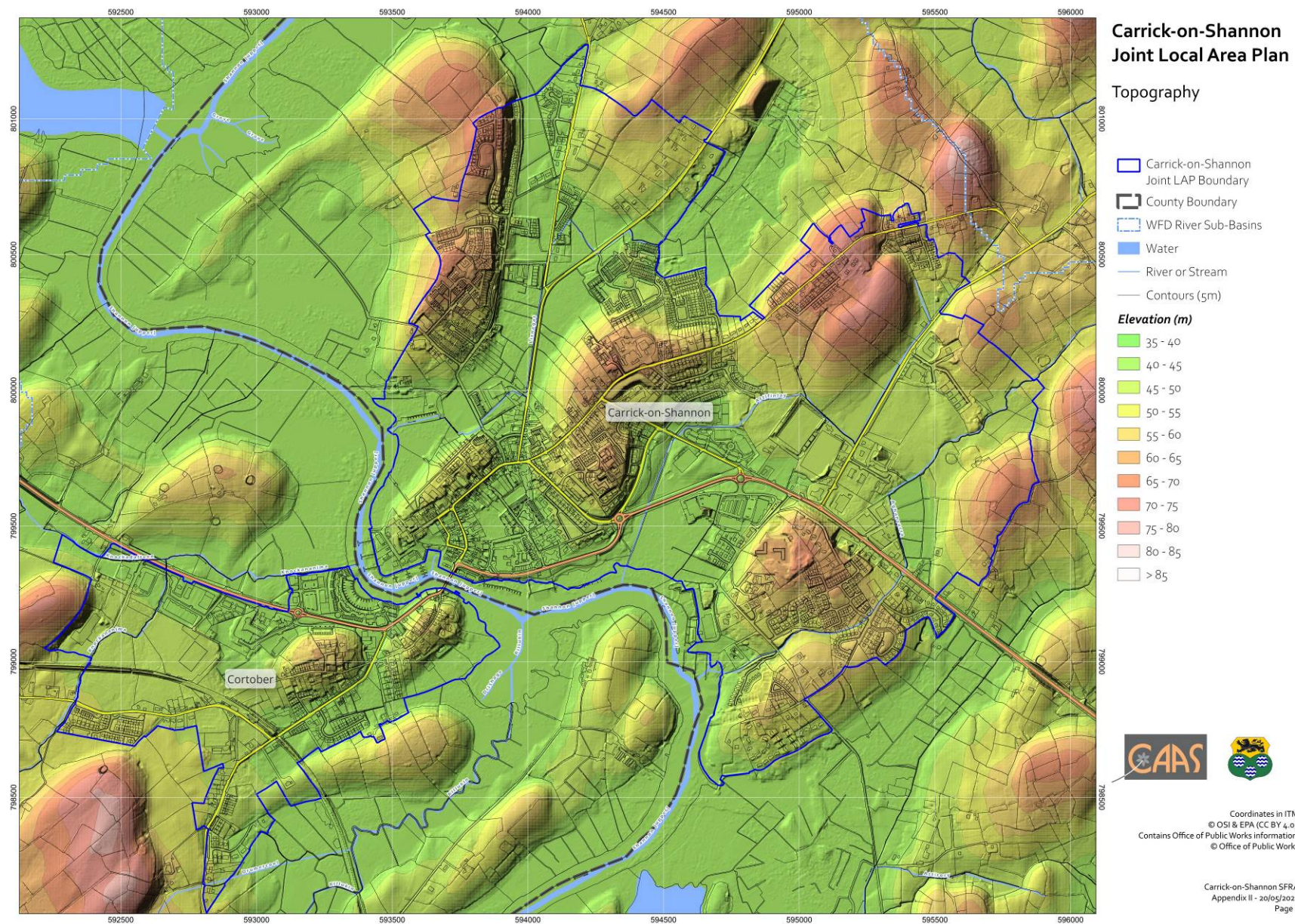


Comhairle Contae
Ros Comáin
Roscommon
County Council

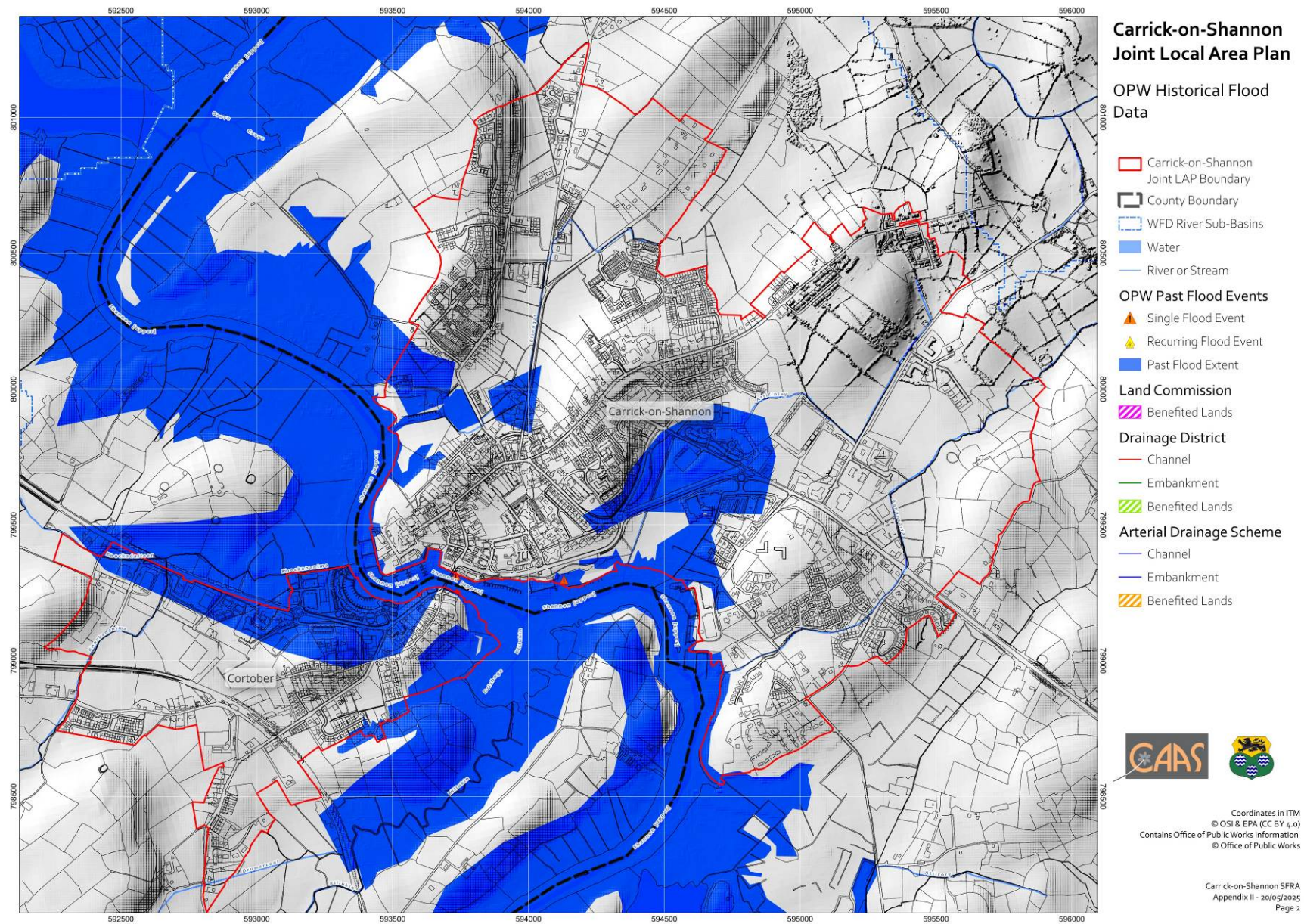
by: CAAS Ltd.



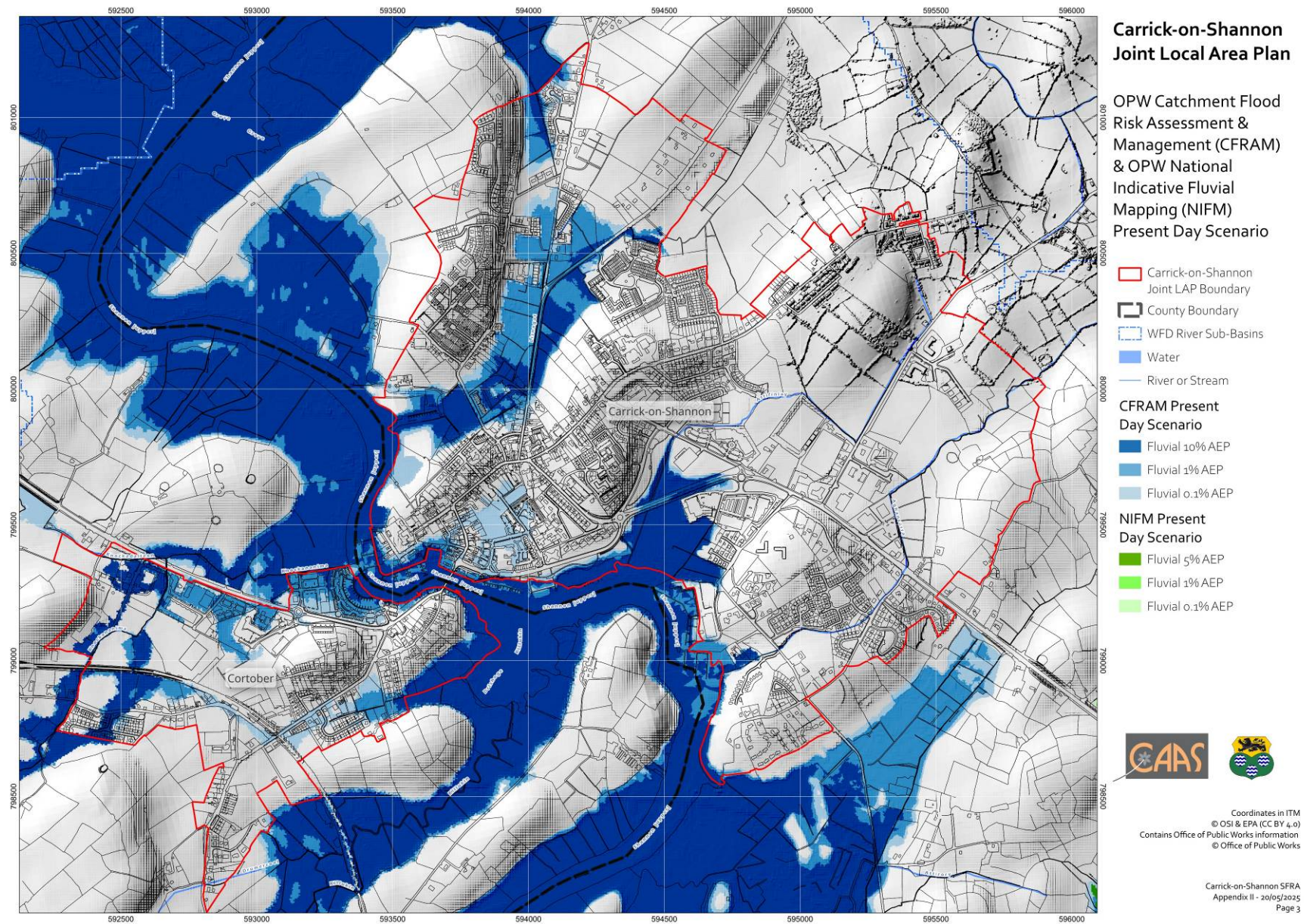
MAY 2025



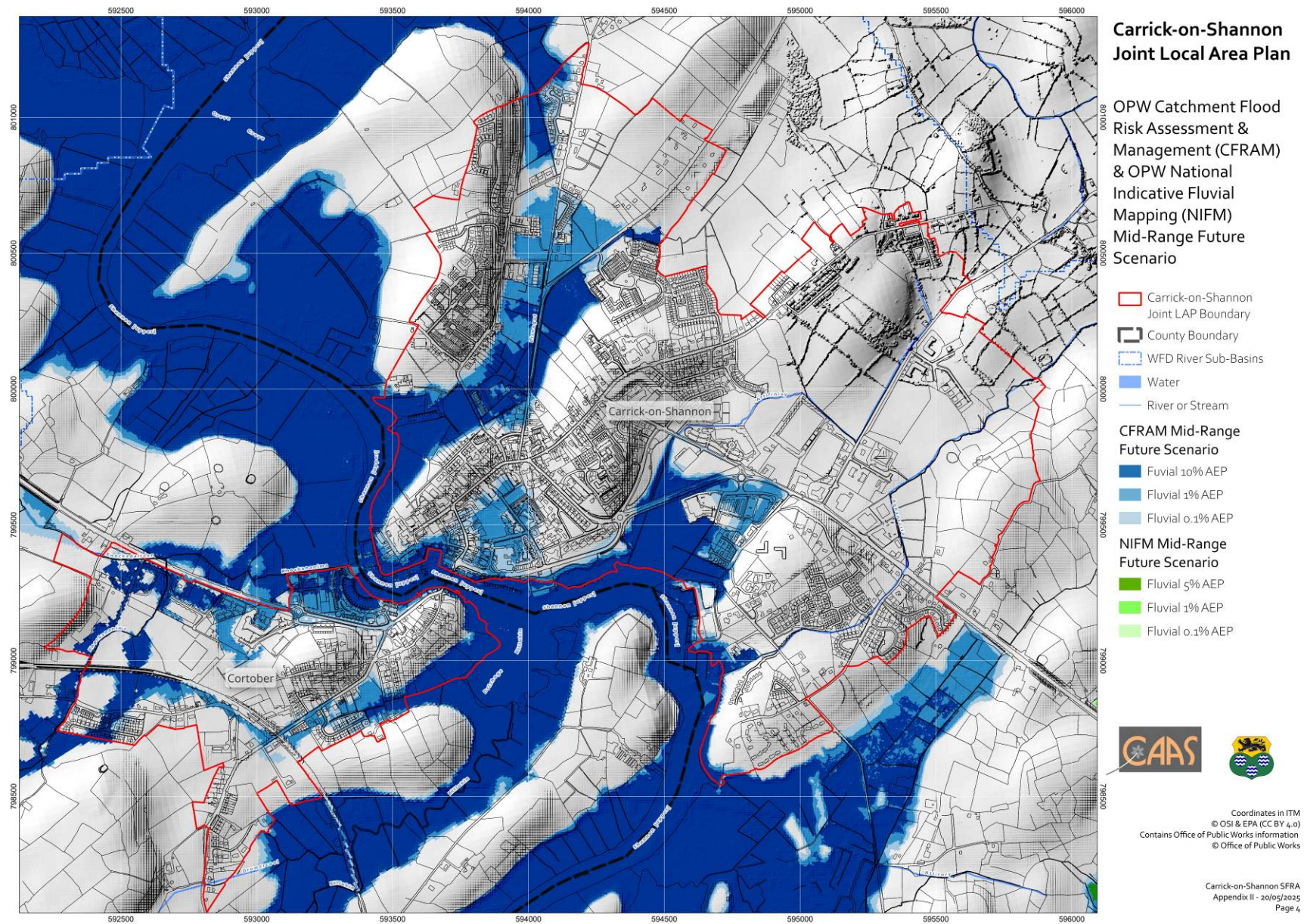
Topography



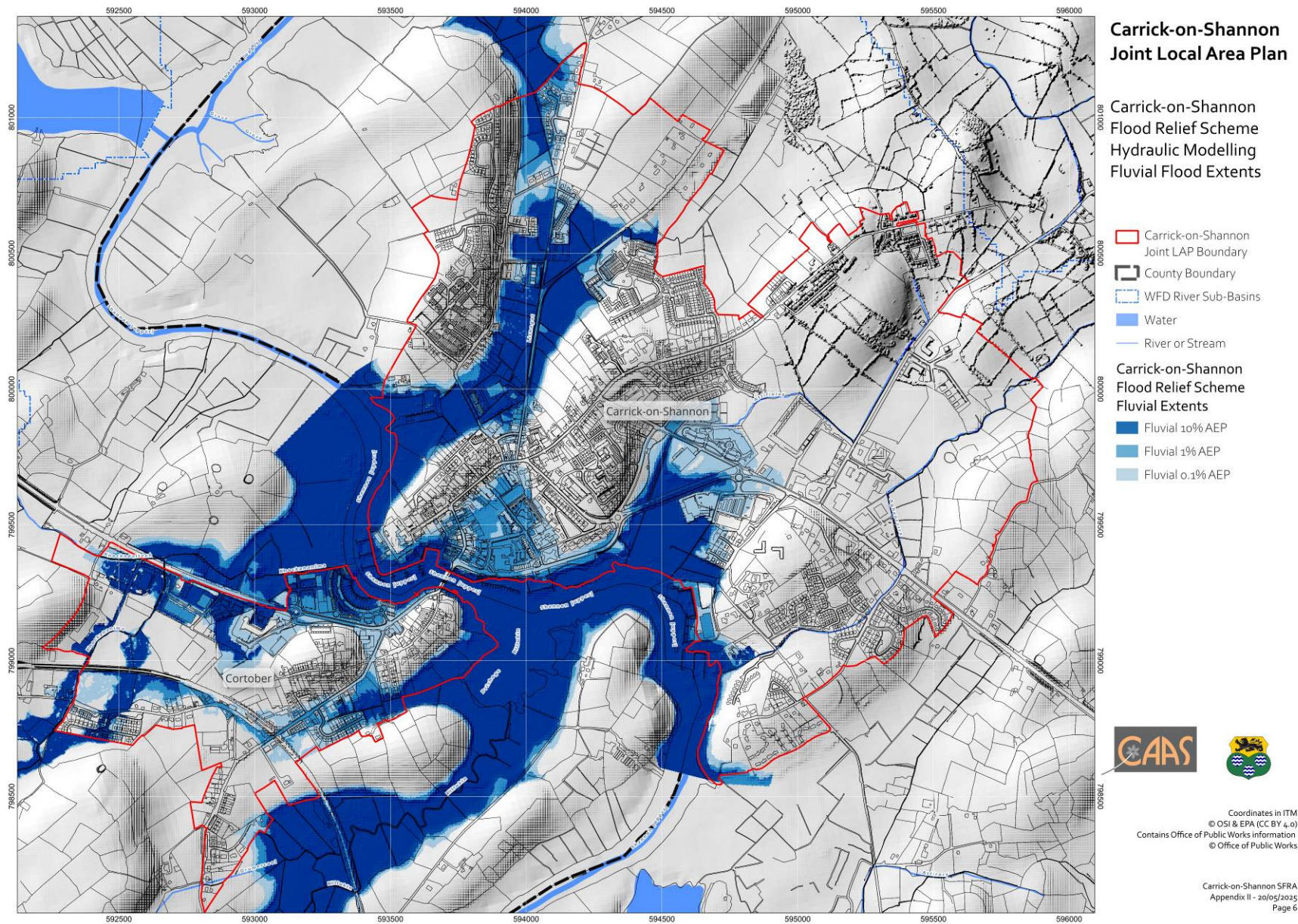
Historical Indicators



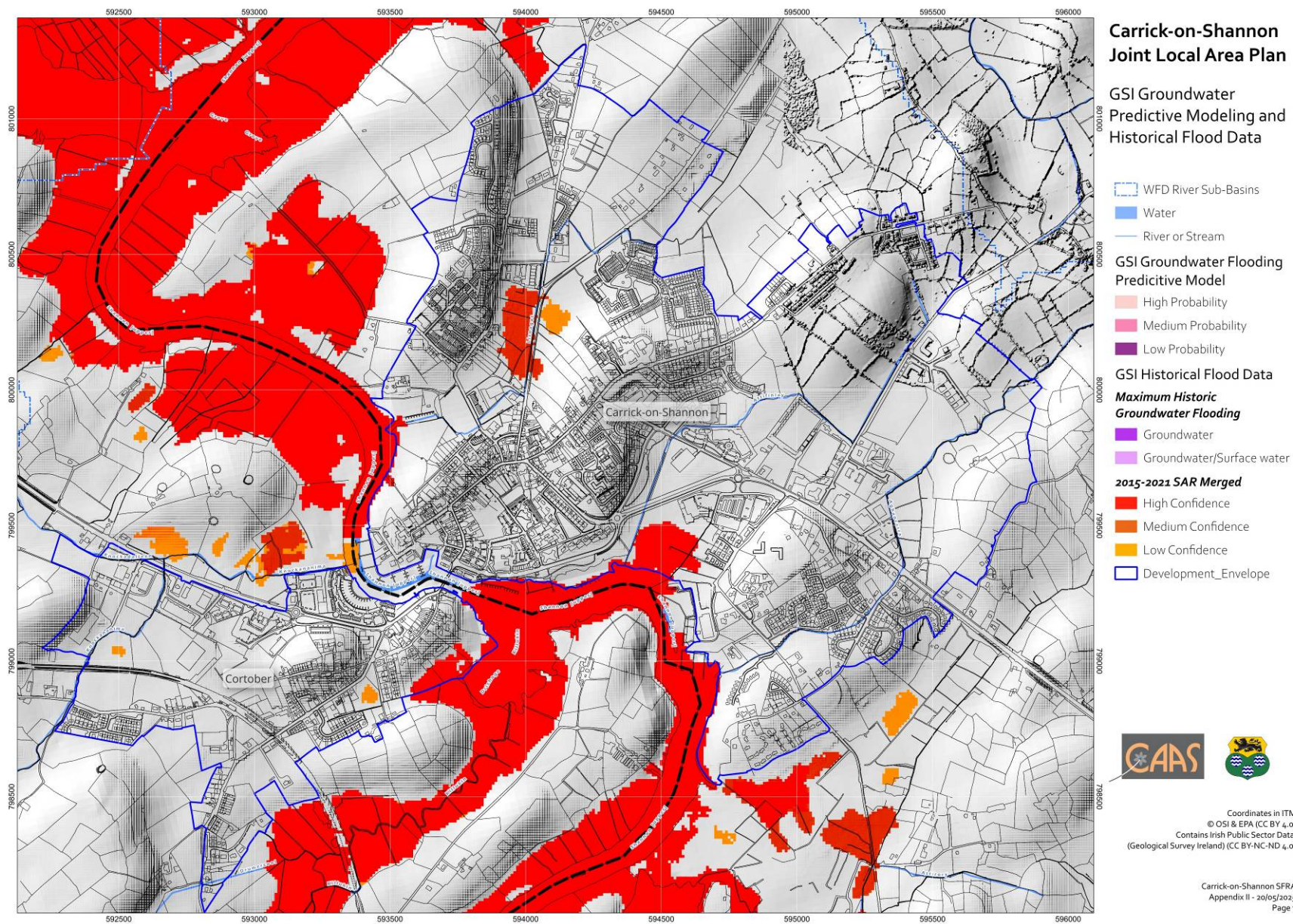
NIFM and CFRAMS Present Day



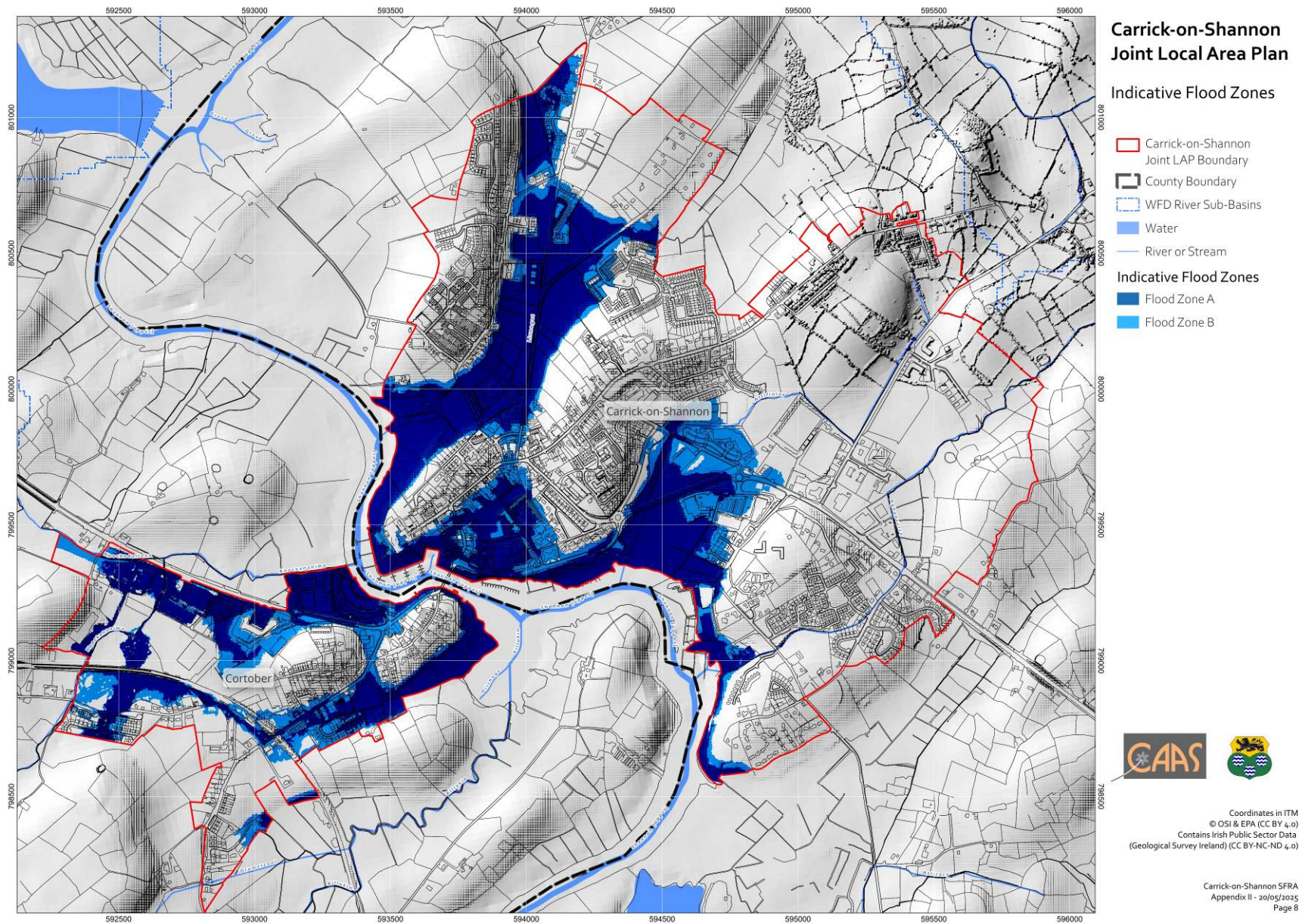
NIFM and CFRAMS Mid-Range



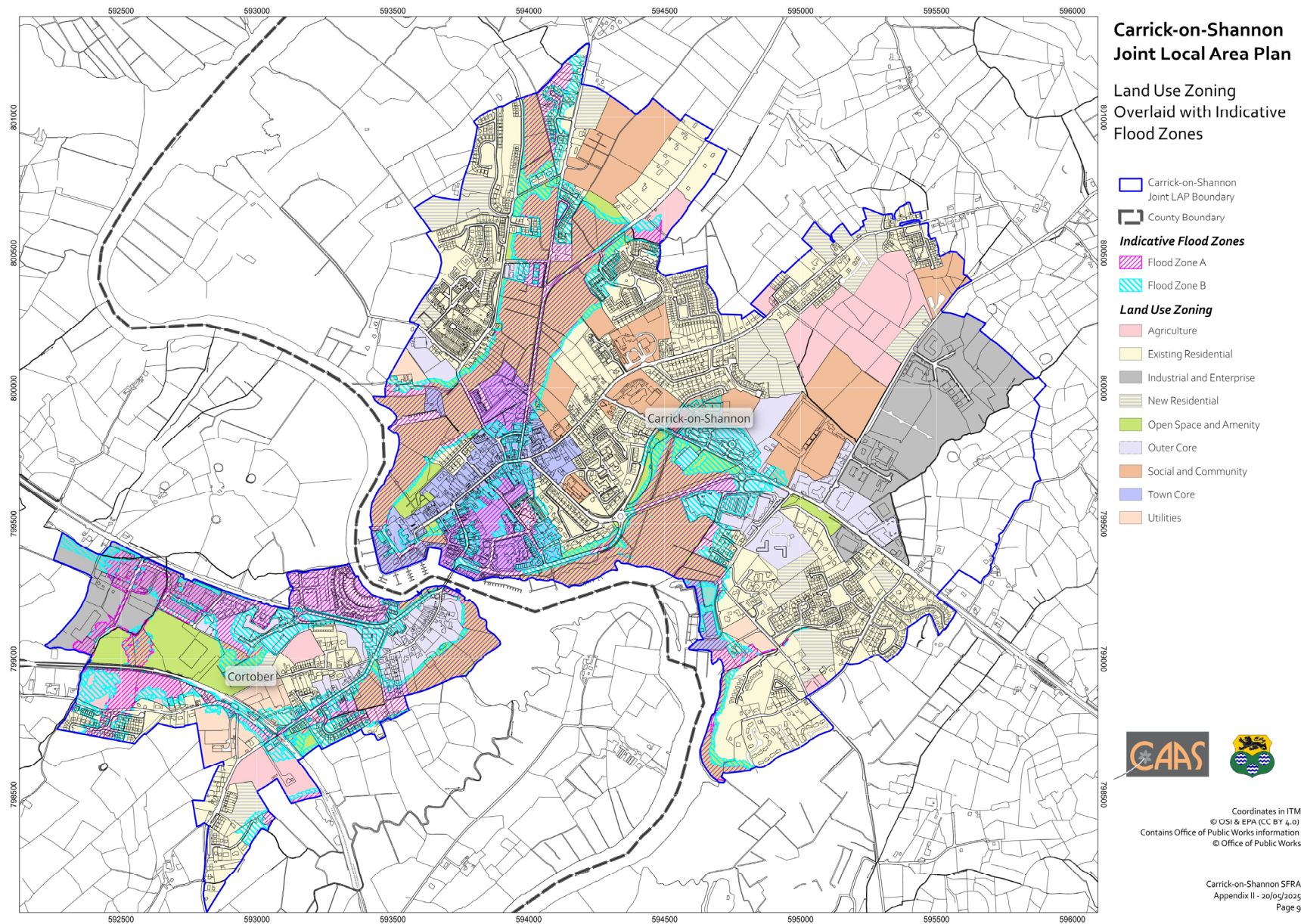
Modelling from the Carrick-on-Shannon Flood Relief Scheme Project



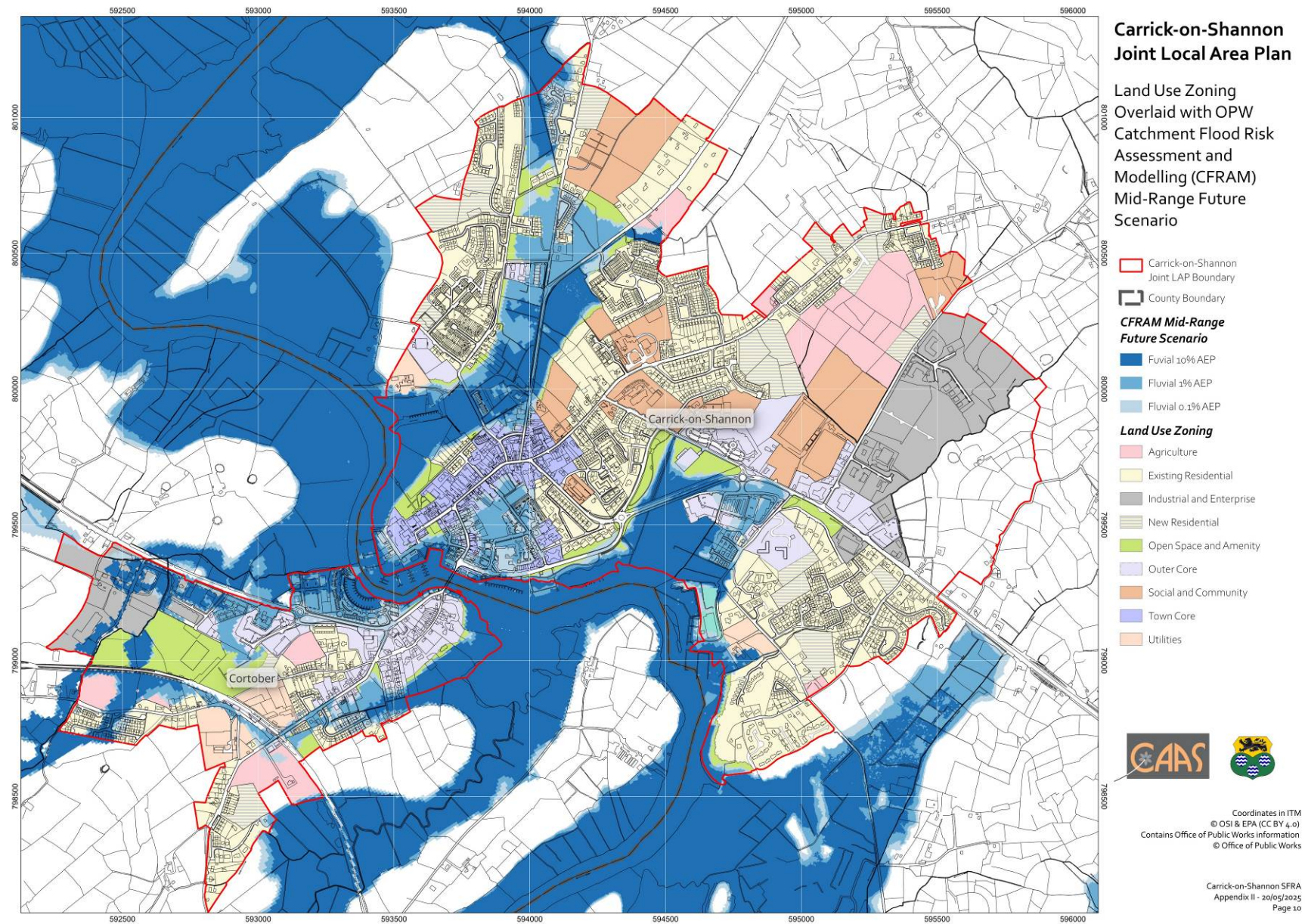
Predictive Groundwater Flood Mapping



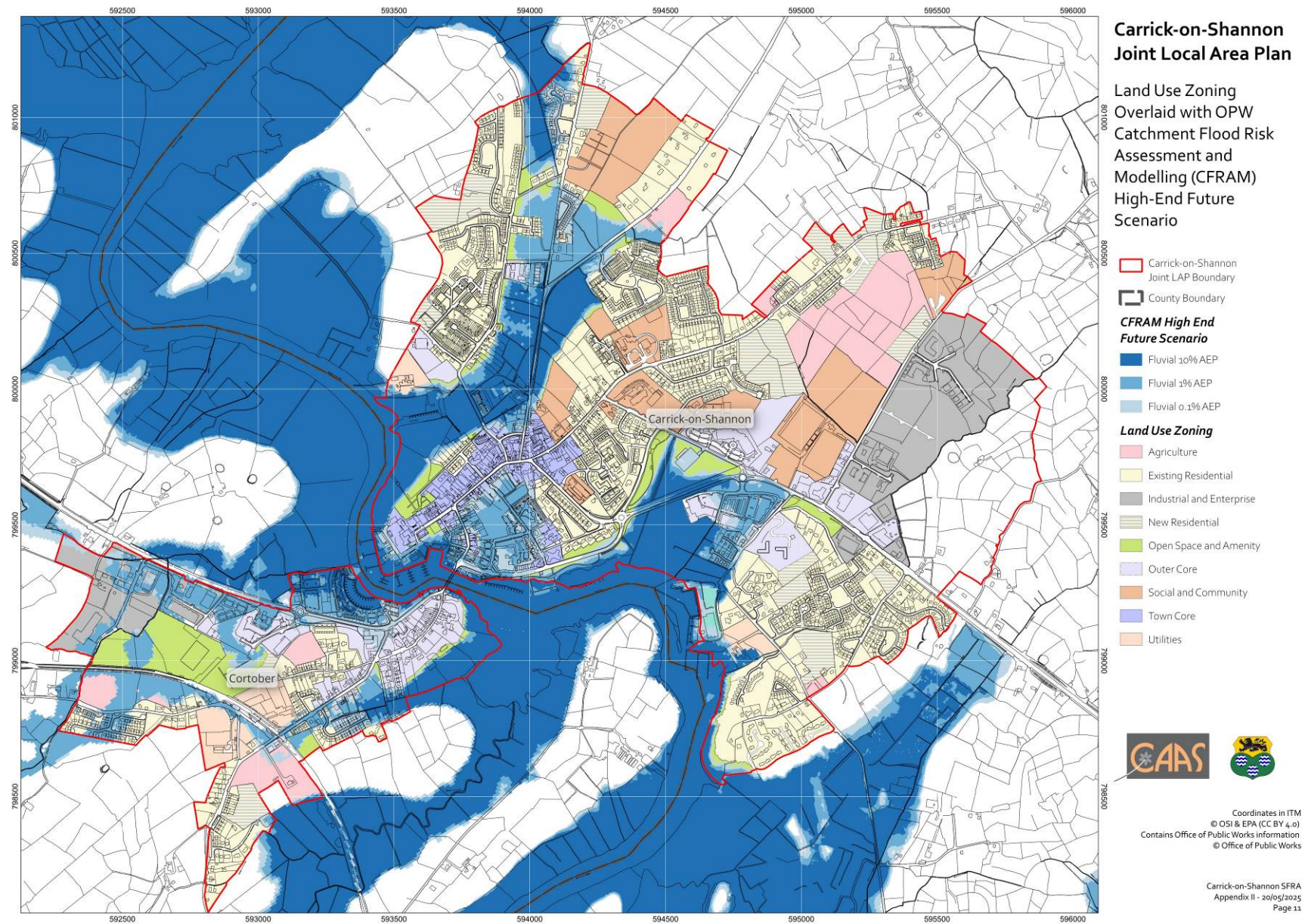
Flood Zones A and B



Land Use Zoning Overlaid with Flood Zones A and B



Land Use Zoning Overlaid with Mid-Range Future Scenario



Land Use Zoning Overlaid with High- End Future Scenario



ROS
COM
MON